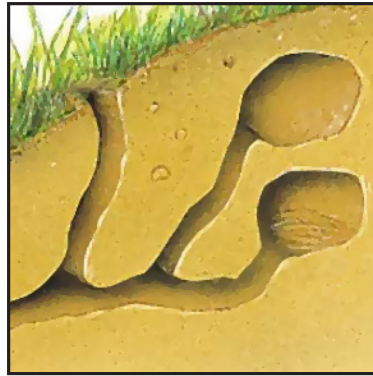


ANIMALS AND THEIR HOMES - Activity 1

Draw a line to match each animal to its home.



BURROW

Burrows are networks of holes and tunnels dug underground. They provide a cool area for sleeping, storing food, and having babies.



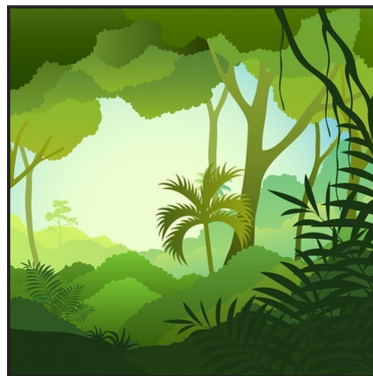
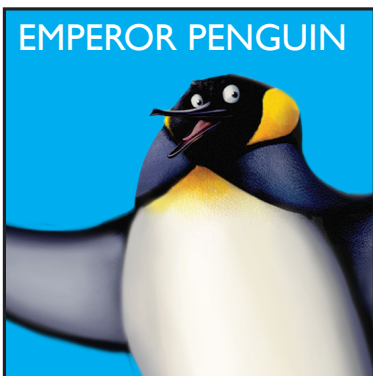
COOP

Coops are found in farms. They contain nesting boxes for laying eggs.



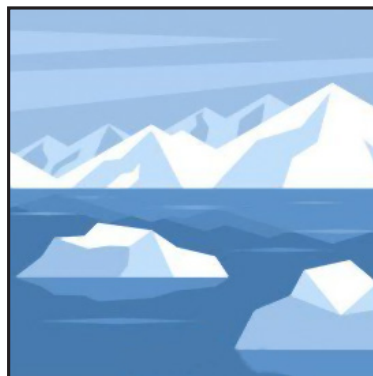
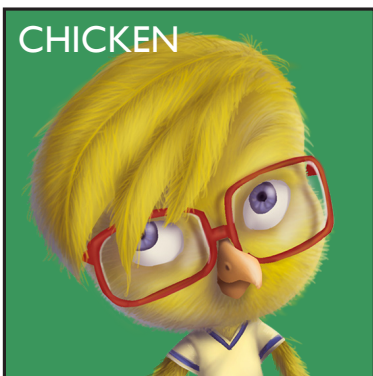
STY

Often found on farms, a sty usually has a mud puddle. The animal that lives here likes rolling around in the mud to keep cool.



RAINFOREST

The animal that lives here eats fruits and leaves from forest trees. It also sleeps in them by sitting on a branch in an upright position.



ICE CAPS

Ice caps are found in extremely cold places. The animal who lives here huddles together in groups to block the strong winds and heavy snow storms.

ANIMALS AND THEIR HOMES - Activity 2

Most of the time, different animals live together in the same place. Draw a line to guide each animal to their homes.



Cow



Wolf



Monkey



Rooster



FARM



FOREST

Weasel



Pig



Duck



Bear

